

Perfect Water Stop System

Time Saving, Work Saving, Effective



Figure 1: Drilling



Polyurethane Resin

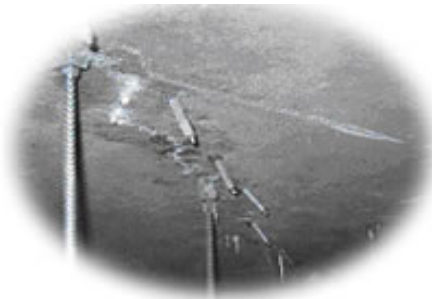


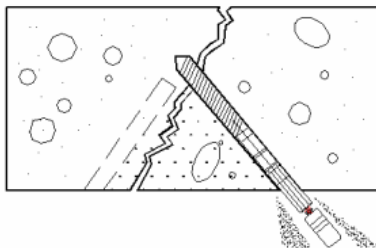
Figure 2: Bury Injection Packer



*DIY Injection Packer
Accessories*



Figure 3: Inject chemical medicine



Principle of Injection



Modern Machine

**Suction Type *RUTH*
Injection Machine**

Machine

High pressure injection machine, injection pressure reaching 8000 Lb, can inject into above 0.02mm hairline crack.







Transferable material suction method:


Besides traditional pour material method, This machine can change to hose material suction method to feed-in material, can save the pouring material time and material. Except while install this rig, need to use cleaner to clean up material feed-in system and suction hose right the way, avoid chemical dried caused blockage inside.

Warranty and Maintains:

This machine is adapted forming assemble design, is easy to assemble, disassemble and maintain, and provide maintain service, and sufficient accessories.

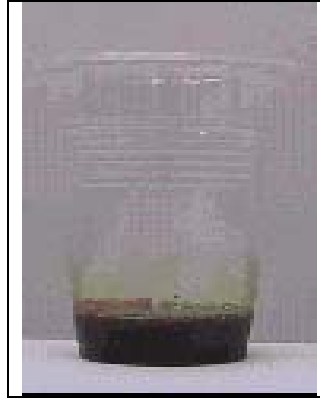
Accessory

No.	Fitting Item	Size and Specification	
IN001 /IN002	1.Driller	Provide every length.	
IE004	2.Packer	Long packer 15cm use on lose structure; Short packer 8.5cm use in compact structure.	
IE008	3.Coupler	German made.	
IE009	4.off-Valve	German made.	
IE010	5.Connector	German made.	
IE011	6.High pressure hose	German made.	

	7.Simple maintaining tool bag		
--	-------------------------------	--	--

PU injection chemical

Ruth PU injection chemical is adopted hydrophilic polyurethane resin , inhere foaming character while come into contact with water, have instant water leaking stop effects to structure water leaking, is the best weapon for the construction building water leaking stopper.



Material

Item No	Material Type	Material Specification
PU-WA	1.High flexibility water stop chemical	Large shrinkage, special for active crack use.
PU-OI	2.Rigid flexibility water stop chemical	Small shrinkage , high foaming rate , suitable for flushing water.
PU-CL	3.Cleaner	For application completed equipment cleaning.
PU-AC	4.Accerlator	Accelerate material reaction, while need to has fast expanding, can adjust its adding proportion.

Application Range

Subway Station、Tunnel、Covert Box、Foundation Improvement、Soil Settlement、Reservoir、Port Project、Top Slab、Crack、Construction Join、Shrinking Crack、Basement hairline crack etc. water stop project.

Safety Caution Matter:

1. During application please wear protection (ex. Glove、goggle) , avoid to direct contact to skin , if happen please use running water to flush , if contacted to eyes need to go to

hospital for medicate care immediately.

2. This product is solvent based material , during application needs to have good ventilation and away from any fire sources. Before material dried , around construction area do not use any open fire.
3. Machine after used needs to use cleaner to clean up thoroughly.